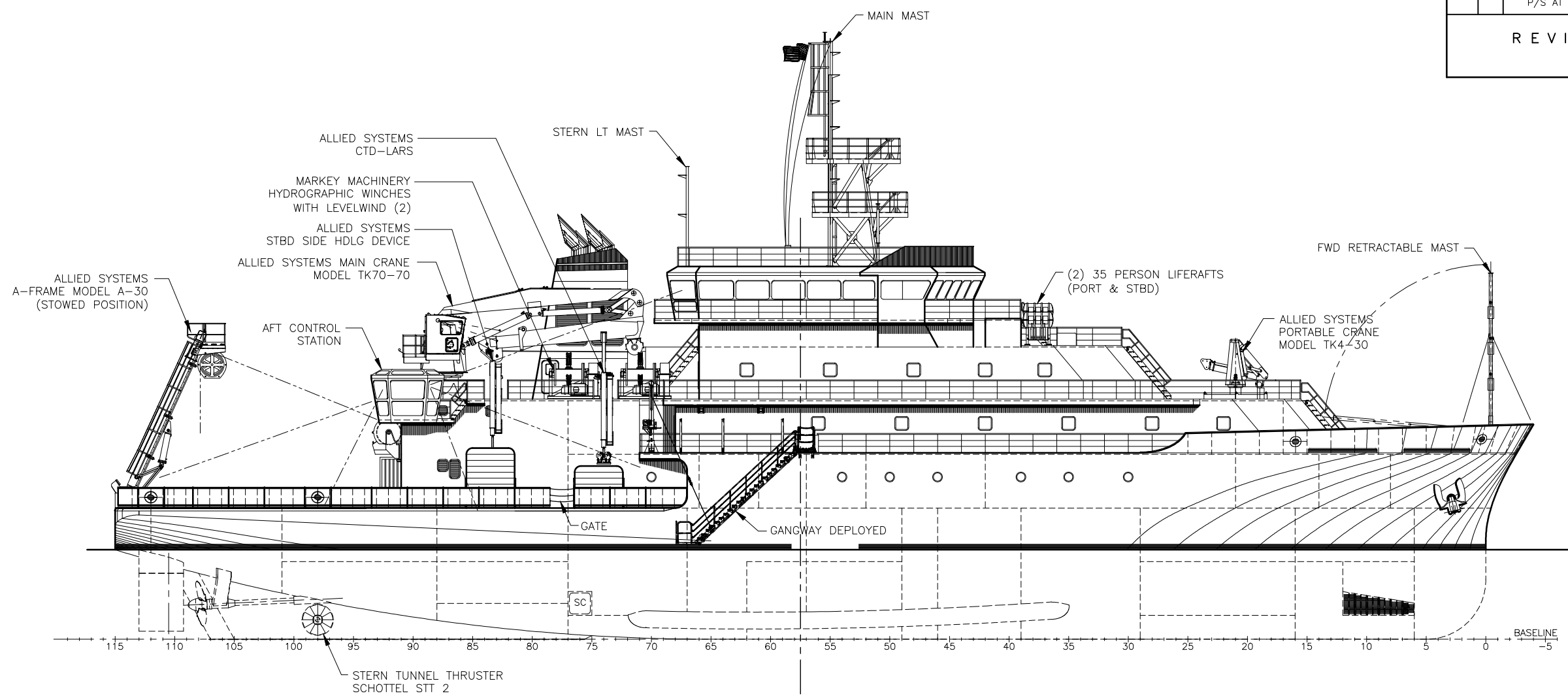


REVISIONS				
ZONE	REV.	DESCRIPTION	DATE	APPROVED
ALL	A	1. REVISED COMPARTMENT NAMES TO PROVIDE UNIQUE IDENTIFIERS. 2. RELOC PHSE CONSOLES TO SUIT PANAMA CANAL. 3. RELOC COFFEE MESS TO SUIT STATUS BOARD. 4. REV TRASH/INCINERATOR RM. 5. DEL OFFICE, MNDK STBD. RELOC MESS HEAD TO PASSAGE STBD. 6. REV MESS SEATING. 7. IN SCULLERY, DEL SILVERWARE SINK AND POT SINKS. 8. FOCLE DK FWD, REV LKR DOOR LOCATION 9. 1ST PLATF, REV MCHRY FLAT STBD. 10. HOLD & 1st PLATF, REV FO WING TK 1, DIAG BHD P/S AT BHD 29 FROM 9'-11" TO 9'-6" OCL.		

REVISIONS "B" CONT'D
ON SHEET 7

DISTRIBUTION STATEMENT A:
Approved for public release; distribution is unlimited.



BULKHEAD LEGEND	
	WATERTIGHT/A60 BHD
	NT STEEL BHD
	JOINER BHD

VESSEL CHARACTERISTICS	
(APPROXIMATE)	
LENGTH OVERALL	= 238'-0"
WATERLINE LENGTH	= 230'-0"
RULE LENGTH	= 220'-9.6"
MAXIMUM BREADTH (MOLDED)	= 50'-0"
DEPTH TO MNDK	= 22'-0"
DESIGN DRAFT	= 15'-0"
SCANTLING DRAFT	= 17'-0"
DESIGN SPEED	= 12 KNOTS

VESSEL CAPACITIES	
(APPROXIMATE)	
FUEL OIL @ 98%	= 147,066 GALS (INCL DAY TKS)
FUEL OIL DAY TANKS @ 98%	= 8,008 GALS
FUEL OIL OVERFLOW TK @ 98%	= 2,289 GALS
POTABLE WATER @ 100%	= 14,629 GALS
BALLAST @ 100%	= 116,639 GALS
ANTI-ROLL TANK @100%	= 7,917 GALS
SEWAGE HOLDING @ 98%	= 4,138 GALS
GRAY WATER TK @ 98%	= 11,955 GALS
WASTE OIL TANK @ 98%	= 5,163 GALS
OILY BILGE TANK @ 98%	= 5,494 GALS

CALL CIRCUIT LEGEND	
ENGINEER CALL CIRCUITS	
A. CHIEF ENGINEER:	ENG DAY RM
B. FIRST ASSISTANT ENG:	SR FD-15
C. SECOND ASSISTANT ENG:	SR FD-3
D. THIRD ASSISTANT ENG:	SR FD-5
BNWAS CALL CIRCUITS	
A. CAPTAIN:	CAPT DAY RM
B. CHIEF MATE:	SR FD-2
C. SECOND MATE:	SR 01-1
D. THIRD MATE:	SR 01-3

PROPULSION:	DIESEL ELECTRIC
PROPULSION MOTORS:	(2) SIEMENS AC MOTORS RATED FOR 876 kW EA @ 200 RPM
MAIN GENERATORS:	(4) CUMMINS QSK38-DM, PRIME RATED FOR 1,044 BkW EA @ 1800 RPM
EMERGENCY GENERATOR:	(1) MTU SERIES 60, 210 KW @ 1800 RPM
BOW THRUSTER:	(1) WHITE GILL 40T3S MK.V-QR, RATED FOR 686 kW @ 677 RPM
STERN THRUSTER:	(1) SCHOTTEL SIT 2 FP RATED FOR 620 kW @ 1470 RPM
CLASS NOTATION:	ABS XA1, (E), XAMS, XACCU, NIBS, ICE CLASS DO, UWILD, OCEANOGRAPHIC RESEARCH VESSEL, UNRESTRICTED SERVICE

ACCOMMODATIONS:	(20) SINGLE STATEROOMS = 20 PERSONNEL
	(11) DOUBLE STATEROOMS = 22 PERSONNEL
	(1) SINGLE HOSPITAL = 1 PERSONNEL
	(1) DOUBLE ACCESSIBLE W/PULLMAN = 3 PERSONNEL
44 PERSONS WITH SURGE CAPACITY TO 46 USING THE HOSPITAL AND THE FOLD DOWN BUNK IN THE ACCESSIBLE STATEROOM.	

DWG	TITLE		
REFERENCES			
APPROVALS			
USCG			
ABS			
OWNER			
HULL NO.	DESIGNER		
58	GUIDO PERLA & ASSOCIATES, Inc. 701 FIFTH AVENUE, SUITE 1200 SEATTLE, WA 98104 U.S.A. Tel: (206) 768-1515 Fax: (206) 768-9700 Email: gpa@gpai.com		
CAGE CODE	SHIPBUILDER		
OW7U3	DAKOTA CREEK INDUSTRIES, Inc. 820 FOURTH STREET, P.O. BOX 218 ANACORTES, WA 98221 Tel: (360) 293-9575 Fax: (360) 293-6453		
NAVSEA DWG. No.	PROJECT		
8565942	OCEAN CLASS AGOR		
ESWS	TITLE		
801-01	GENERAL ARRANGEMENT PROFILE		
DWN	GTH	DATE	04/20/10
CKD	CC	DATE	04/20/10
APVD		DATE	
APVD		DATE	
DWG No.		65411-801-01	
SCALE		3/32" = 1'-0"	
SHEET		1 OF 7	

HALF SIZE PRINT

PLOT DATE: Thursday November 14 2013
 PLOT TIME: 11:29:28 am
 PLOT DIR: C:\USERS\DC\APPDATA\LOCAL\TEMP\ACPUBLISH_5116\
 FILE DIR: 65411
 FILE NAME: DCI 027-04 R80101 REV-D.DWG