

Tropical Storm Gordon is lashing South Florida with rain and wind. Upper Gulf Coast on alert. Follow the latest on the storm.

World > North America > United States > New York > Southampton

ENGLISH (US), °F

Southampton, NY



Follow us on

United States Weather

Southampton, NY

75°F

Allergies: Low

Home

Radar & Maps

News & Video

Hurricane

Climate

Social

Watch News

NEWS

VIDEOS

BLOGS

PERSONALITIES

Jebi approaches Japan as a life-threatening typhoon



By Kristina Pydynowski, AccuWeather senior meteorologist

By Eric Leister, AccuWeather senior meteorologist

September 03, 2018, 12:02:42 PM EDT

Share this article:



NETWORK ERROR

Cannot Contact Server

[RELOAD YOUR SCREEN OR TRY SELECTING A DIFFERENT VIDEO](#)

Residents across Japan should be making final preparations as Typhoon Jebi is expected to threaten lives and property from late Monday night into Wednesday.

While Jebi remains across open waters, boats, including large vessels, will have to reroute their courses around the extremely rough seas being stirred by Jebi across the central and northern Philippine Sea.

While no land is currently being affected by Jebi, residents from Shikoku and southern and central Honshu should be preparing for a direct hit.

"Damaging winds and coastal flooding may be the most significant impacts with this storm," according to AccuWeather Senior Meteorologist Adam Douty.

Trending News

Tropical Storm Gordon has US Gulf Coast on alert

Bear unwinds by swinging on neighbor's hammock

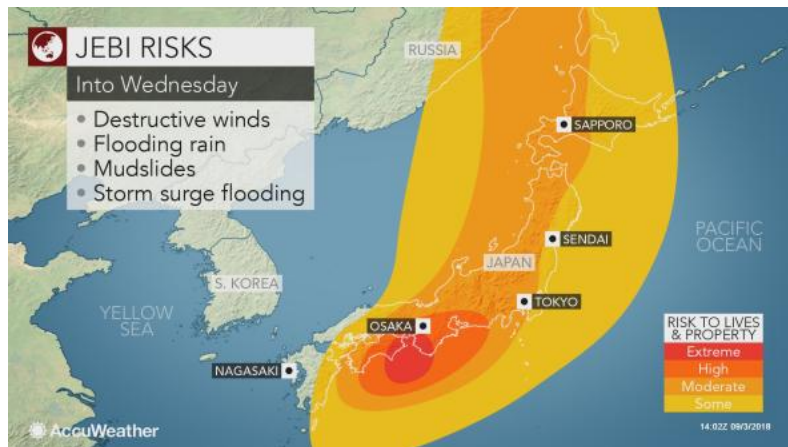
TRENDING NOW



September is National Preparedness Month: Follow these tips to be ready when disasters occur

National Preparedness Month (NPM) is recognized every September to remind us how crucial it is to prepare ourselves and our families for when disasters strike.

[Read Story](#)



Jebi, once a super typhoon, is anticipated to slam into southern and central Honshu and far eastern Shikoku on Tuesday, local time, before racing toward Hokkaido Tuesday night into Wednesday.

"While we expect some weakening as Jebi nears landfall in Japan, it should still have the equivalent strength to that of a Category 2 or 3 hurricane," Douy stated.

"Highest-sustained winds at landfall can be about 145-160 km/h (90-100 mph), which will have the potential to cause significant damage," he said. "Some wind gusts near the coast could be higher than this."

RELATED:

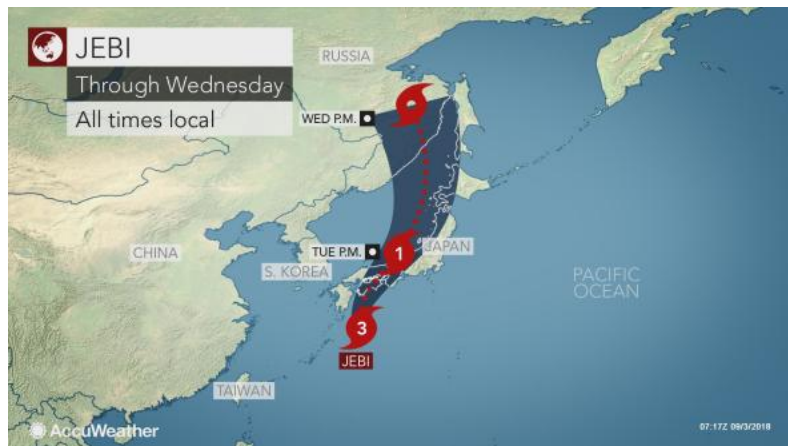
- [Interactive radar for Japan](#)
- [Storm surge: Explaining the fury and science behind one of nature's most potent forces](#)
- [2018 Asia autumn forecast: Japan may face flood threats as drought builds from Ukraine to Kazakhstan](#)

The current forecast track of Jebi, which has high confidence, puts the prefectures of Kochi, Tokushima, Wakayama, Nara and Mie at risk for a direct hit and the most destructive winds.

Mie, Wakayama, Tokushima, Aichi and Shizuoka at greatest risk of a direct landfall and the most destructive winds. This includes the cities of Hamamatsu and Shizuoka.

Well-built homes and businesses can sustain major damage, especially to roofs. Many trees can be snapped or uprooted, which can further damage property. Widespread power outages and water shortages can last for several days or weeks in the areas hit hardest by Jebi's destructive winds.

Downed trees and power lines can block roads, significantly delaying storm cleanup and recovery.



The southern coast of Japan, near and east of where Jebi slams onshore, can



5 potentially dangerous hurricane preparation myths debunked

Misconceptions circulating during hurricane season are nothing new. Here are five common beliefs surrounding hurricane preparations that have proven to be false.

[Read Story](#)

[More Trending Now](#)



DID YOU KNOW?

Scientists in Japan have discovered that sunflowers can be used to clean up radioactive waste, as the flower gobbles up radioactive isotopes thinking it's nutrients.

also face life-threatening storm surge flooding. Residents in coastal areas, including those around Ise Bay, should prepare to evacuate and do so when orders are given by authorities.

The quick movement of Jebi may limit major flooding, but flash flooding and mudslides are still concerns in the mountains of central Honshu where an AccuWeather Local StormMax™ of 400 mm (16 inches) of rain is anticipated.

Damaging winds, widespread tree damage, prolonged power outages and flash flooding may not be confined to areas where Jebi makes landfall.

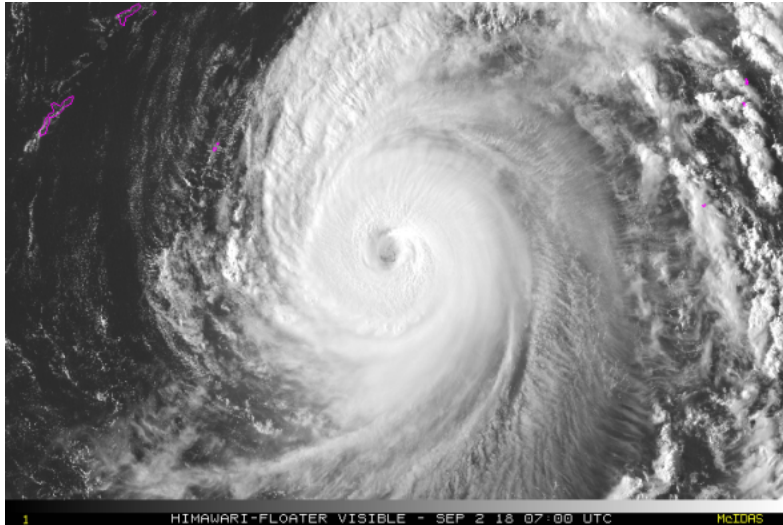
"Outside of where Jebi moves inland, wind gusts of 95-130 km/h (60-80 mph) may be more common across central Honshu," according to Douty.

Gusts in the lower end of this range may also be seen in Tokyo, even if the city escapes the heaviest rainfall.

Windows of skyscrapers can get knocked out with the falling glass creating more hazards for people on the city streets below. Based on the latest projected path, the worst conditions in Tokyo will occur late in the afternoon into Tuesday night. Gusty winds and downpours will continue into Wednesday, impacting the morning commute.

There can be major disruptions to travel as rail, ferry and flight services may be forced to shut down for a time. Air travelers planning to fly through Tokyo's Haneda Airport on Tuesday and Wednesday may want to consider rescheduling.

Schools and non-essential businesses may close.



This satellite image shows Super Typhoon Jebi in the Western Pacific on Sunday evening, Sep, 1 Japan time. (Photo/NOAA)

"Jebi should weaken while tracking across Japan into Wednesday, though it can still be a typhoon during much of its path," Douty said.

Douty warns of isolated wind damage and localized flooding across northern Honshu and western Hokkaido Tuesday night into Wednesday. Seas will also become dangerous around these areas.

Download the free AccuWeather app to stay aware of the dangers associated with Jebi.

"By Wednesday, Jebi is expected to curve into far southeastern Russia and eventually dissipate during the second half of the week," Douty said.

Destruction caused by Jebi would further put a strain on Japan's disaster recovery budget. Japan has already been hit hard by other tropical systems, historic flooding and a deadly heat wave this year.

"Jebi will be the seventh named storm to impact Japan this year and comes on the heels of Cimaron, which slammed into Japan less than two weeks ago," according to AccuWeather Senior Meteorologist Jason Nicholls.

[Report a Typo](#)

Weather News

Comments

Comments that don't add to the conversation may be automatically or manually removed by Facebook or AccuWeather. Profanity, personal attacks, and spam will not be tolerated.

More Weather News



UK: Cool, wet weather to arrive late this week following hottest summer on record

Weather News - September 03, 2018, 1:15:48 PM EDT

While an overall warmer than normal autumn is expected across the U.K., a change to cooler and wetter weather is expected in the coming days.



September is National Preparedness Month: Follow these tips to be ready when disasters occur

Weather News - September 03, 2018, 10:09:09 AM EDT

National Preparedness Month (NPM) is recognized every September to remind us how crucial it is to prepare ourselves and our families for when disasters strike.



US upper Gulf Coast on alert as Tropical Storm Gordon lashes Florida

Weather News - September 03, 2018, 3:29:17 PM EDT

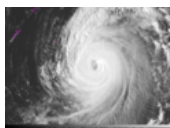
Gordon may make landfall as a strong tropical storm or Category 1 hurricane over the central Gulf coast late Tuesday.



Monsoon downpours focus on northern India as river flooding threatens the North East

Weather News - September 03, 2018, 9:38:22 AM EDT

The greatest risk for flooding from monsoon downpours will focus on north-central India into this week, while the country's North East region is facing river flooding following heavy rain that inundated China.



Jebi approaches Japan as a life-threatening typhoon

Weather News - September 03, 2018, 12:02:42 PM EDT

Residents across Japan should be making preparations as Typhoon Jebi is expected to threaten lives and property from Monday night into Wednesday.



When is Tropical Storm Gordon's peak? Risk of flooding to precede Tropical Storm Gordon in southern US through Labor Day

Weather News - September 03, 2018, 12:14:04 PM EDT

Dangerous winds will be created for the Hawaiian Islands. A plume of tropical moisture will lead to potential heavy rain in the Southeastern United States, but also lead to flash flooding across parts of Texas and Louisiana.

[More Weather News](#)



"My TV is no longer jealous of my phone."

ACCUWEATHER NOW AVAILABLE ON
verizon FiOS



SkyGuard® Severe Weather Warnings — Site-specific warnings that provide double the lead time than other warning services.

AccuWeather
ENTERPRISE SOLUTIONS

[The Weather Station for Smartphone](#)

[Site Specific Severe Weather Warnings](#)

[AccuWeather - Weather for Life](#)

COMPANY

- [Superior Accuracy in Action](#)
- [About AccuWeather](#)
- [Media Kit](#)
- [Careers](#)
- [Press](#)
- [Contact Us](#)

PRODUCTS & SERVICES

- [Enterprise Solutions](#)
- [D3: Data Driven Decisions](#)
- [AccuWeather Network](#)
- [StoryTeller](#)
- [Tools for Broadcast](#)
- [Radio & Newspaper](#)
- [AccuWeather APIs](#)

APPS & DOWNLOADS

- [iPhone App](#)
- [Android App](#)
- [Windows App](#)
- [See all Apps & Downloads](#)

SUBSCRIPTION SERVICES

- [AccuWeather Premium](#)
- [AccuWeather Professional](#)