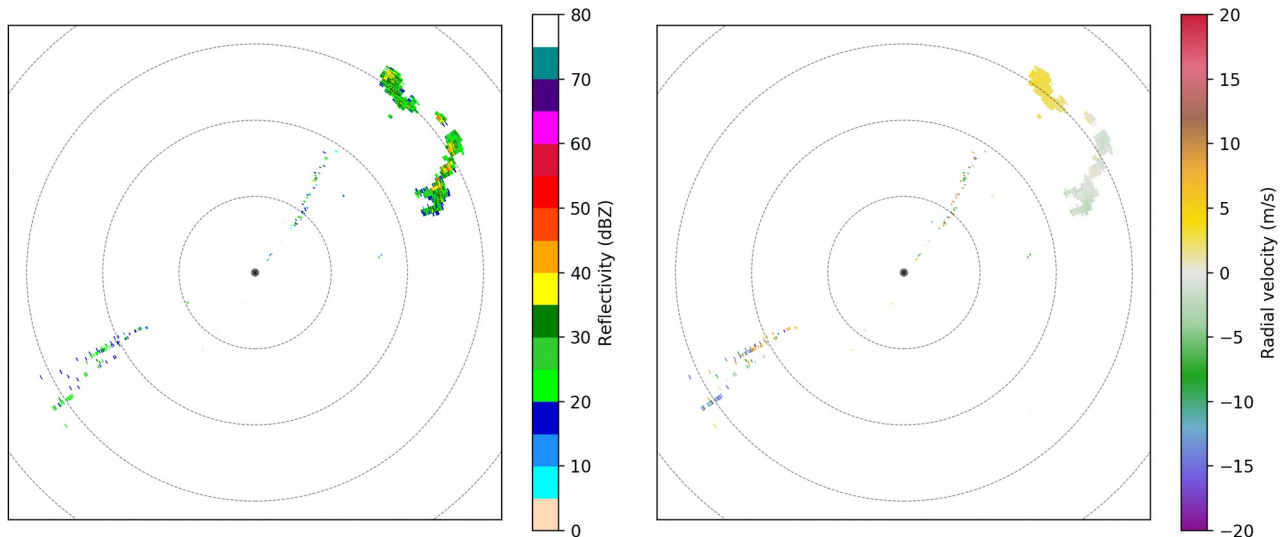


20180820  
Day Shift (4a-4p L)  
Timothy Lang

0043 UTC - Been running a test with a 6-tilt surveillance scan (PISTON\_SECTOR) to make sure the radar checks out and the processing software works. Test is working well. There is scattered shallow convection ~100 km to the NE, and an island to the SW (Babuyan).

SEAPOL 2018-08-20 00:47:27 PPI 0.5°



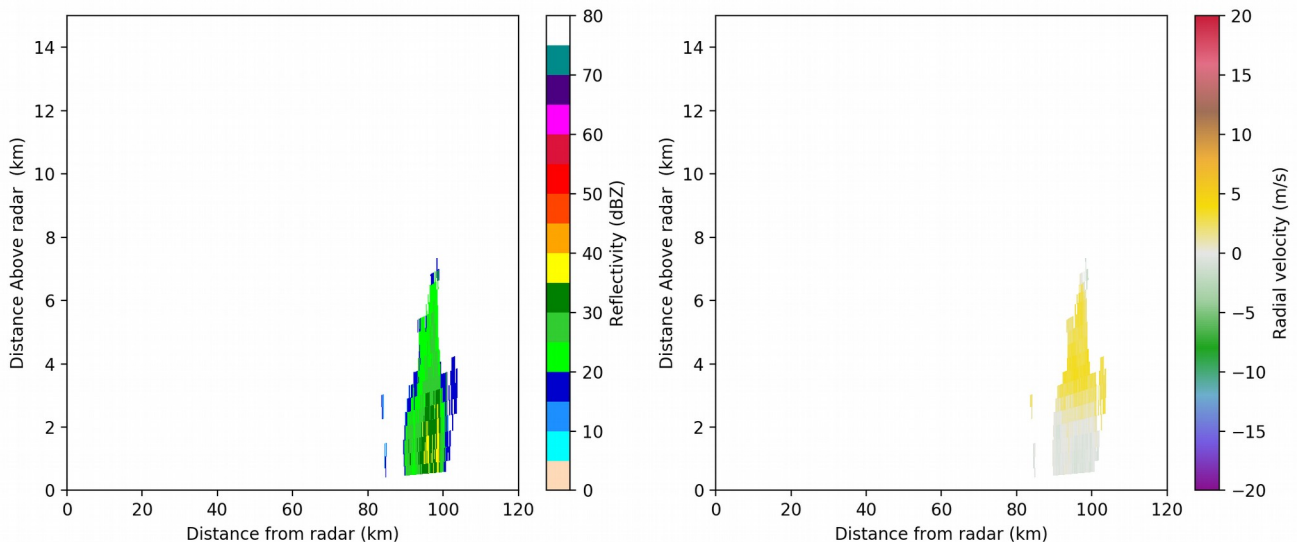
0052 – Testing out RHI scans on convection near ~35 deg azimuth.

0056 – Adjusting max range of RHIs to 120 km (was 100 km).

0058 – Switching to cell near 60 deg.

0103 – Latest RHI from the eastern cell. Looks like maritime convection!

SEAPOL 2018-08-20 00:57:29 RHI 63.0°



0104 – Terminating scanning soon due to proximity to islands and presence within Philippines EEZ. This was only a test, no issues noted. We are ready as soon as we get out of the EEZ. Estimated ops start near 0000 UTC on 8/21.

0141 – Been doing some time series scanning, due to combined presence of sea and land clutter.

Night Shift (4p-4a L)  
Scott Powell

1941: Persistent lightning has been occurring off the bow (120 deg) for several hours. Otherwise, mostly clear skies.. Soon exiting the Filipino EEZ. 0.5 deg surveillance scans now run to determine scan strategy to execute and RHI sector.

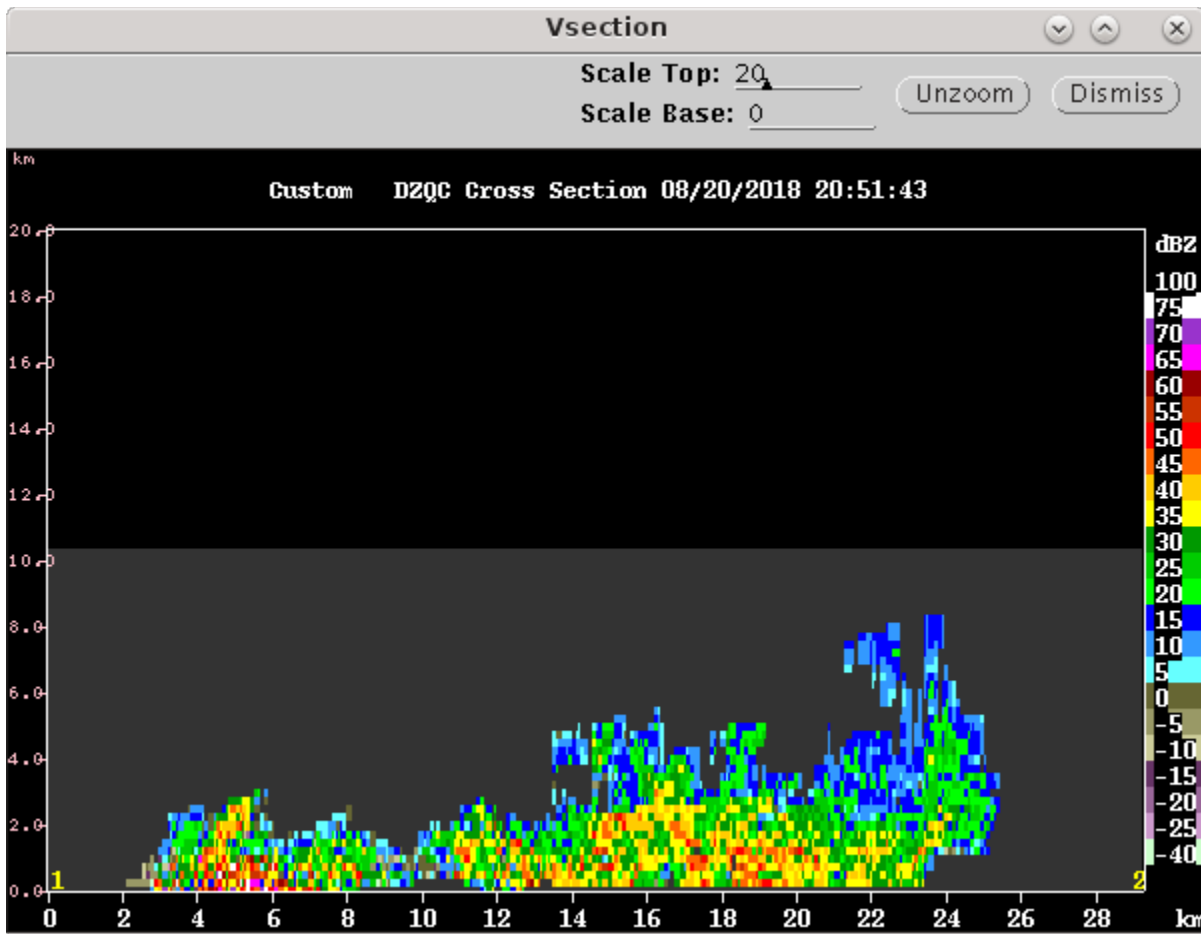
1947: Brody's code doesn't make viewable files/figures using single scan angle. Added 2 deg scan to surveillance scan and repeating.

1956: Apparently Brody's code just doesn't make figures for surveillance scans. Running the SPURS2 volume scan next.

Day Shift (4a-4p L)  
Timothy Lang

2045 – Back to operations, running PISTON\_LOW. Scattered convective cells.

2059 – Short line of convection within 25 km to SE, here is IRIS view.



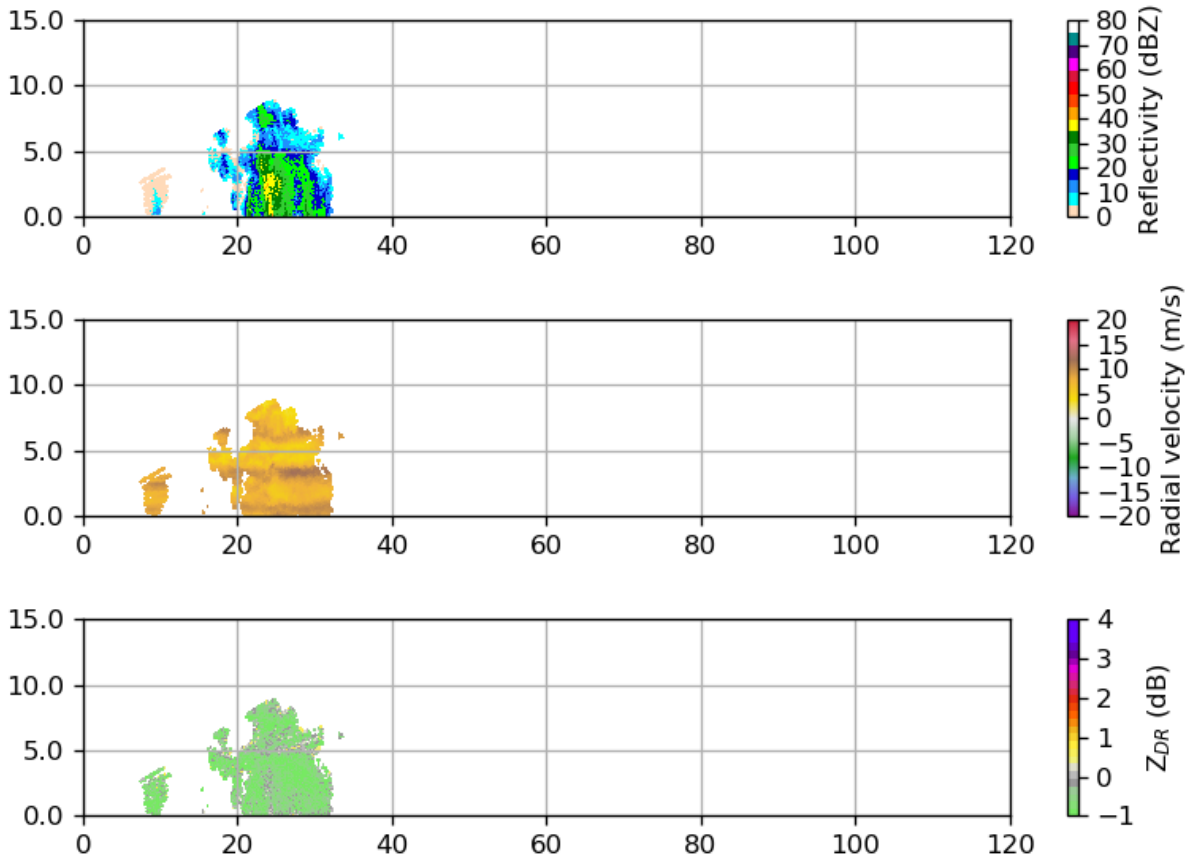
2103 – RHIs thru 100-110 az, now restarting with PISTON\_FAR due to nearby convection.

2109 – RHIs thru 84-98 az this round.

2113 – Switching to PISTON\_NEAR for next volume. After it finishes we need to fix the RHIs being set to mandatory in IRIS. They should not be mandatory. Took a photo of the storm from outside.

2121 – ZDR might be a little low. Reporting only up to 0 dB in bright band, while negative below. See below image:

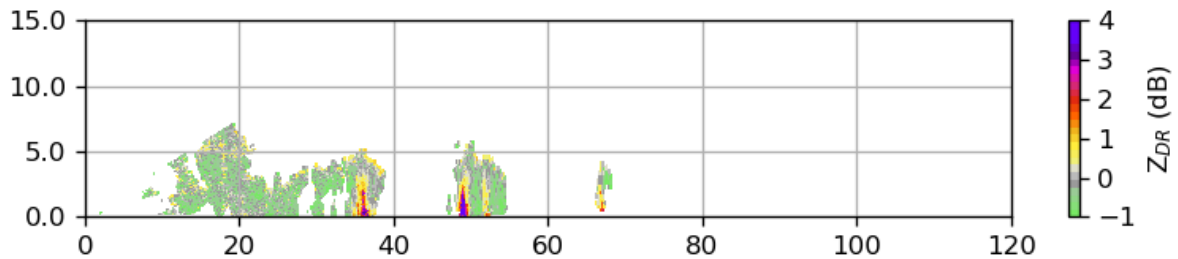
# SEAPOL 2018-08-20 21:13:42 RHI 98.0°



2128 – Mandatory issue resolved. RHIs running 80-94. Finished a little early.

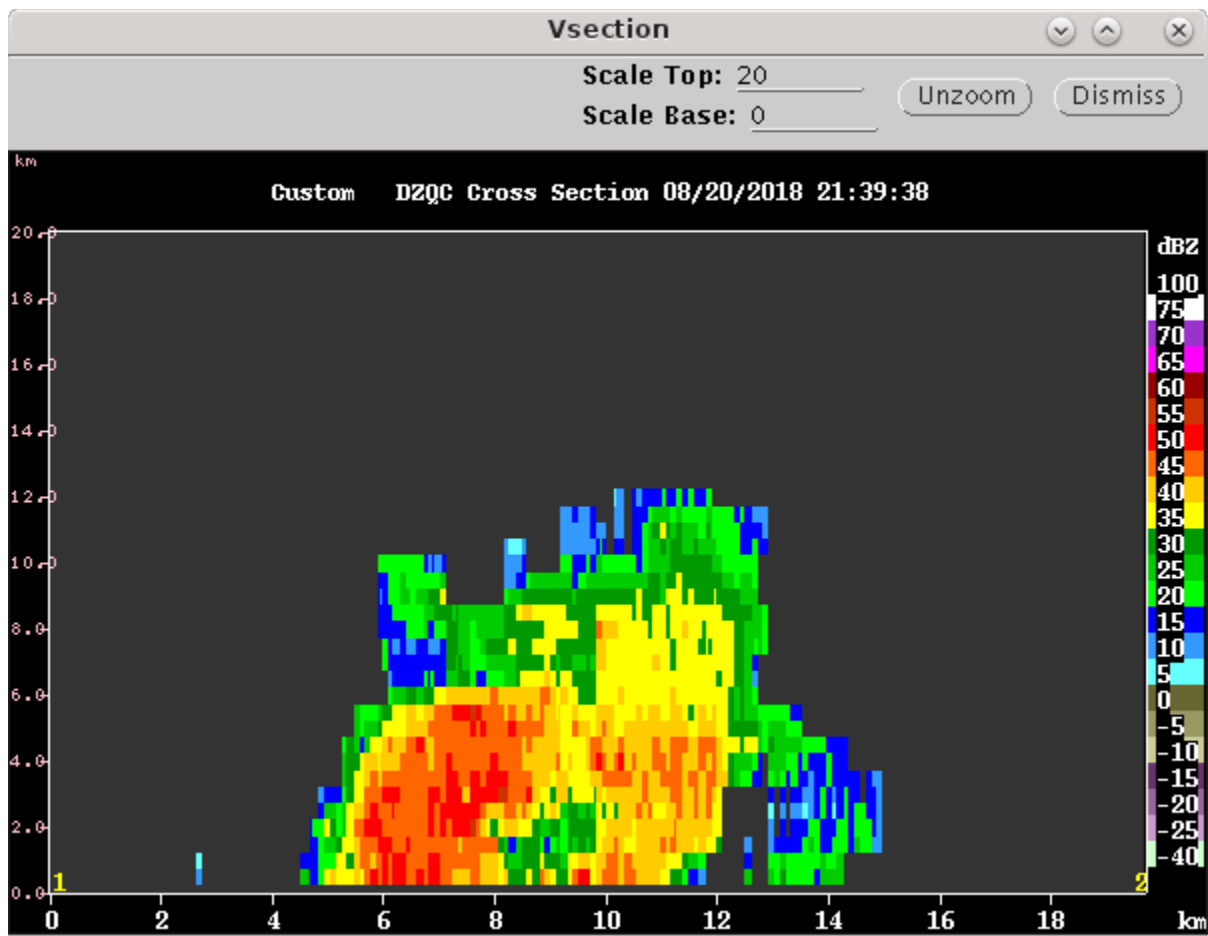
2130 – PISTON\_NEAR restarted on time. Tops to 10 km in storm. Some new convection to SSE, about 50 km away.

2135 – Some 3+ dB ZDR even with the negative bias (82 az).



2140 – Trying two sets of RHIs, near 160 and near 80 az.

2147 – Tops to 12 km in SE convection, 30 dBZ to 10+ km. About 40 km away.



2151 – Topping everything already. Switching to PISTON\_FAR next.

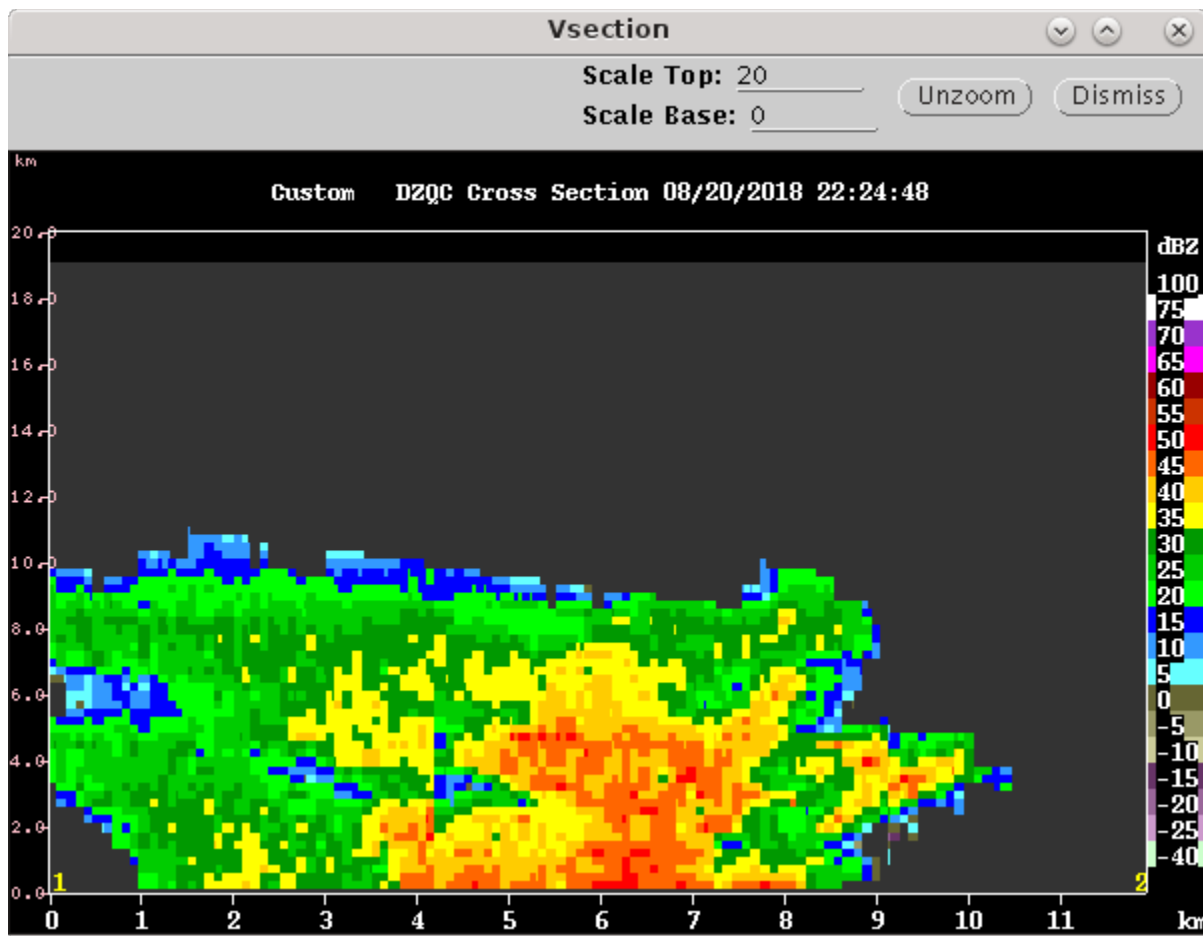
2159 – Pretty congestus to SE, turrets have some pileus caps. Took a photo.

2207 – RHIs to new cell to SW, also previous cell to SE. Switching to NEAR next volume, due to SW cell.

2212 – SW cell to 14 km, about 25-30 km away.

2220 – Switching RHIs to focus solely on SW cell, trying 14 sweeps to 20 deg elev.

2231 – Hit well on RHI volume. Keeping general set of angles, only minor adjustments to account for ship motion. NEAR PPIs maintained as well. Storm to SW looks healthy. Some other scattered cells on scope.



2236 - New development to SW, a bit closer than 20 km. Adjusting RHI volume to compensate. ZDR doesn't look as negative now. Transmitter warm-up issue?

2300 – Southern storm too close for decent RHIs that top it.

2308 – Looking SE with RHIs. This storm nearly on top of us now.

2317 – Moving RHIs to eastern cells, about 60 km out.

2336 – Sonde launched.

2350 – Switching to PISTON\_LOW next round. RHIs have been set to SE convection.

Note: May have been an issue with earlier RHI volumes not being saved if they were interrupted. This was fixed toward the end of today.