

20180906
Day Shift (4a-4p L)
Timothy Lang

0033 – Scope still empty.

0153 – CYGNSS overpass. Nothing on scope.

0339 –Totally empty. Still.

Shift Summary

Weather was sunny and suppressed. Small, short-lived cells at range only, and even those were rare. Most suppressed day shift all cruise. No RHIs were attempted.

Night Shift (4p-4a L)
Scott Powell

1226: There's a single small cell that's hung around for a few scans now and it's shooting over the top of the FAR_S, so adding a few tilts.

1324: Back to 6 tilts. Echo had decayed by the time I increased the number of tilts anyway.

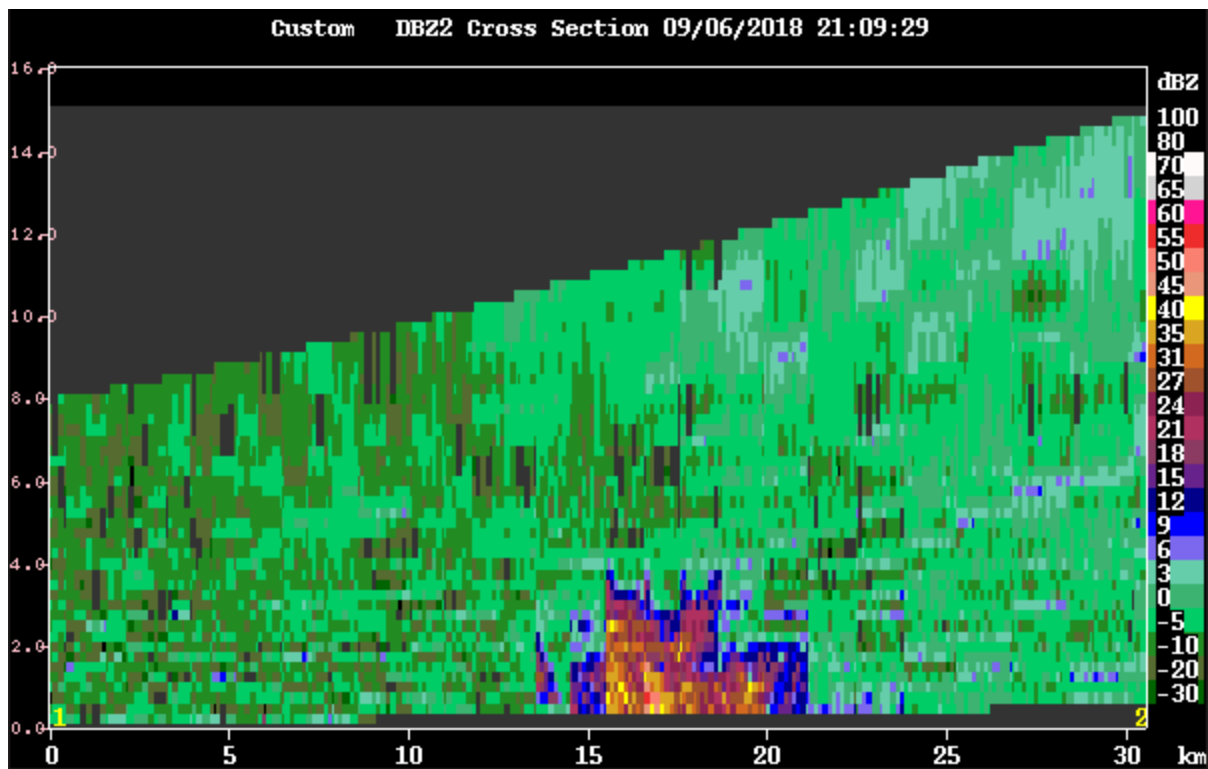
1843: Added a couple tilts for a single growing young cell.

Day Shift (4a-4p L)
Timothy Lang

1902 – Trying some RHIs on this small cell to the SW this round.

1954 – There are enough little cells about that I am switching to LOW next round, just so we don't get caught flat-footed with bad echo-top coverage. Nothing really worth RHIs yet, tho.

2122 – Small cell near us is about 4 km tall. There are just a few of these types of cells, scattered around the domain. Staying in LOW for now w/ SUR but no RHIs.



2201 – Going back to FAR_S next round. Small cells continue to pop up, but die just as quickly.

2205 – Never mind, small cell close to ship, sticking with LOW.

2209 – Actually, cell is close enough switching to FAR next round.

2223 – LOW next round.

2300 – Even the pathetic cells that were out and about have tapered off. Going back to FAR_S next round.