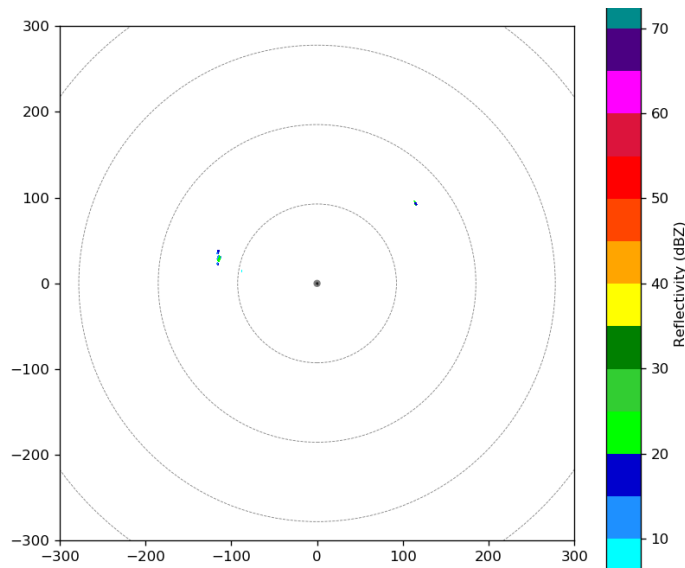


**20181008**  
**Morning Shift (9A-1P L)**  
**Ben Trabing**

0020 – Use FAR scans with fewer elevation angles to reduce stress on radar. No precipitation is indicated in the radar domain.

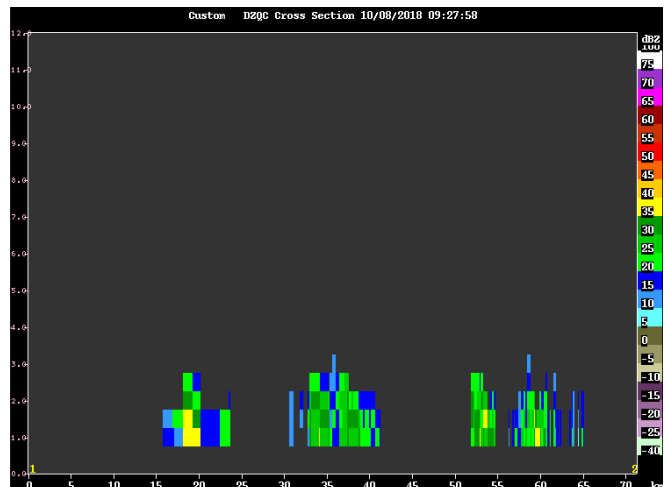
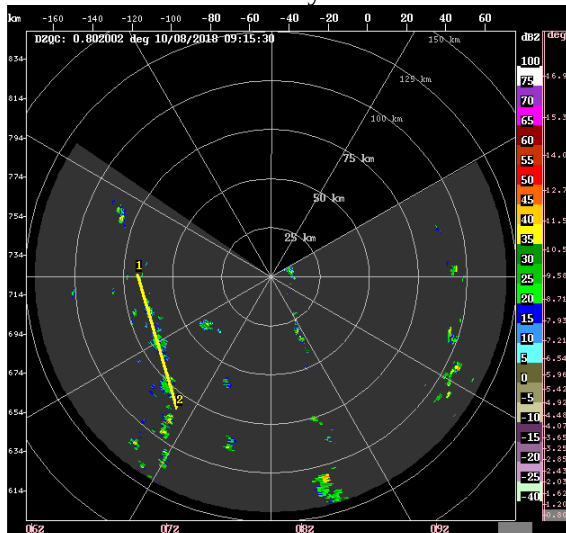
0255 – There is still nothing going on on in radar range.



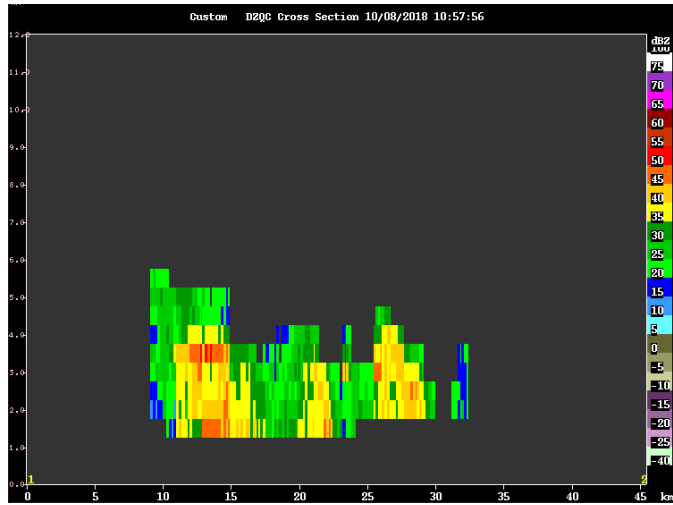
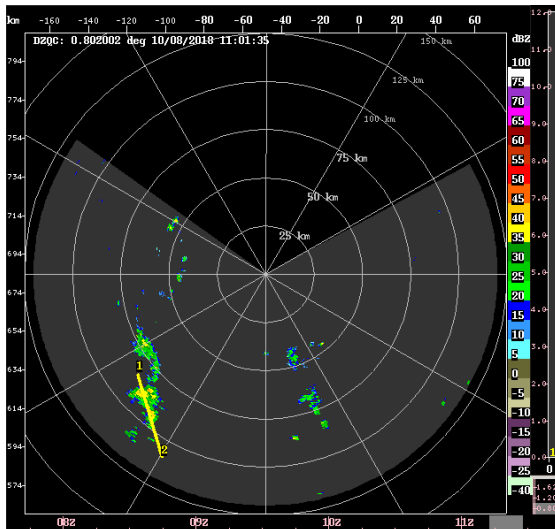
**Afternoon Shift (1P-9P L)**  
**Weixin Xu**

0400 – Operate SURVEILLANCE and FAR\_S scans because of none convective activity even within the 300 km radar range.

0800 – Switch to LOW PPI scanning, as shallow condition started to develop and increase. Most of the convection is very shallow with echo-top only up to 2-3 km altitude.



1115 – Keep running in the LOW PPI mode. Convection is still mainly warm rain shower, rarely grow above the freezing level before decaying.



**Night Shift (9P-4A L)**  
**Naufal Razin**

1207 – Continue with low and surveillance scans.

**Morning Shift (4A-9A L)**  
**Ben Trabing**

1900-- Nothing going on, going on, continue scanning strategy.