



Windbird  
>>>>>>



Rear Port View



Temp/RH Baro  
<<<<<<<<<<<<

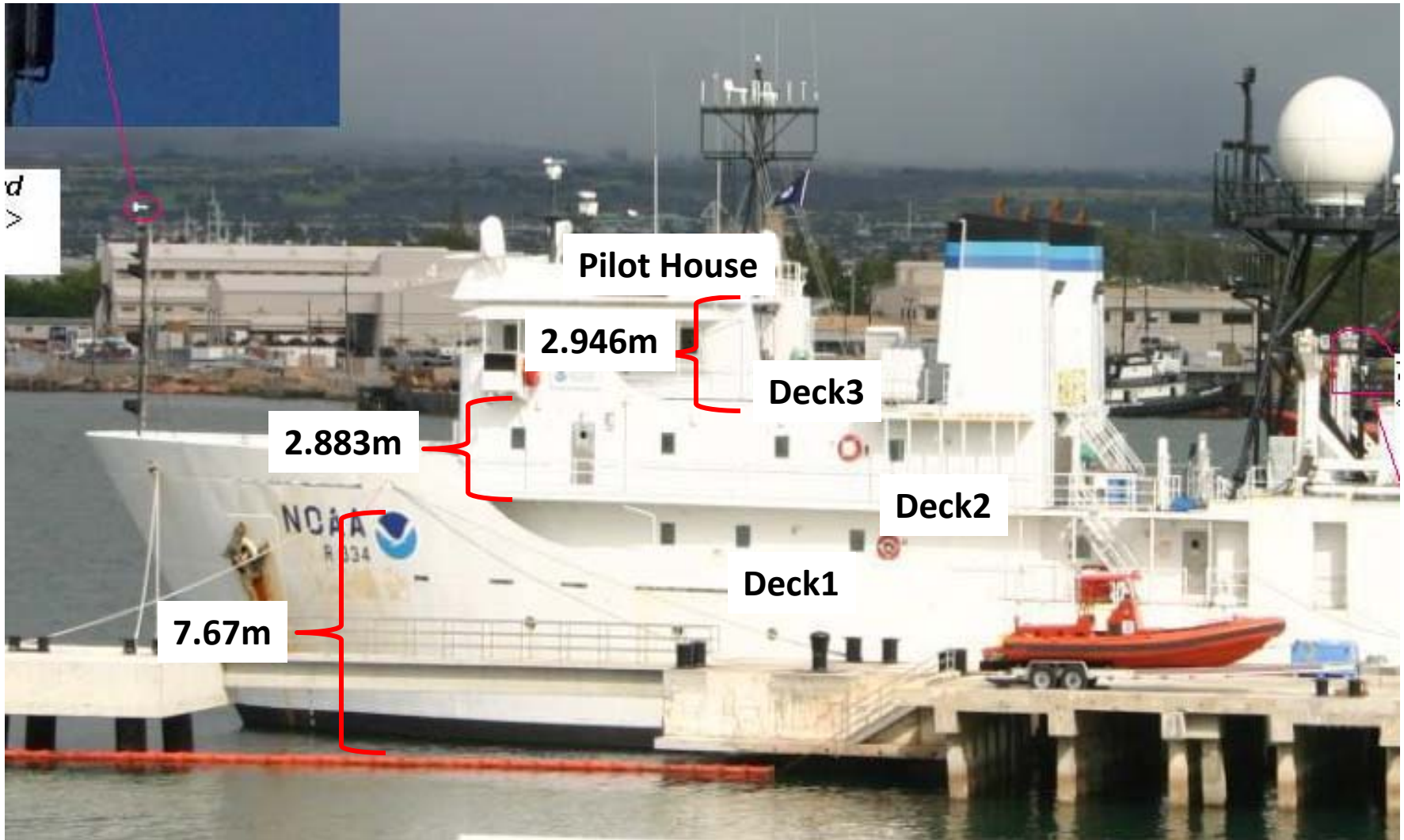


Closeup view from forward



**Ships Instruments****Model**

<b>RMY Prop-Vane</b>	<b>05106</b>
<b>RMY T/RH</b>	<b>41382</b>
<b>RMY Multi-Plate Radiation Shield</b>	<b>41003</b>
<b>RMY Pressure</b>	<b>61302</b>
<b>RMY Pressure Port</b>	<b>61002</b>
<b>RMY Ultrasonic</b>	<b>8500</b>
<b>RMY Translator</b>	<b>26700</b>
<b>Vaisala Pressure</b>	<b>PTB330</b>
<b>Vaisala Static pressure head</b>	<b>SPH10</b>



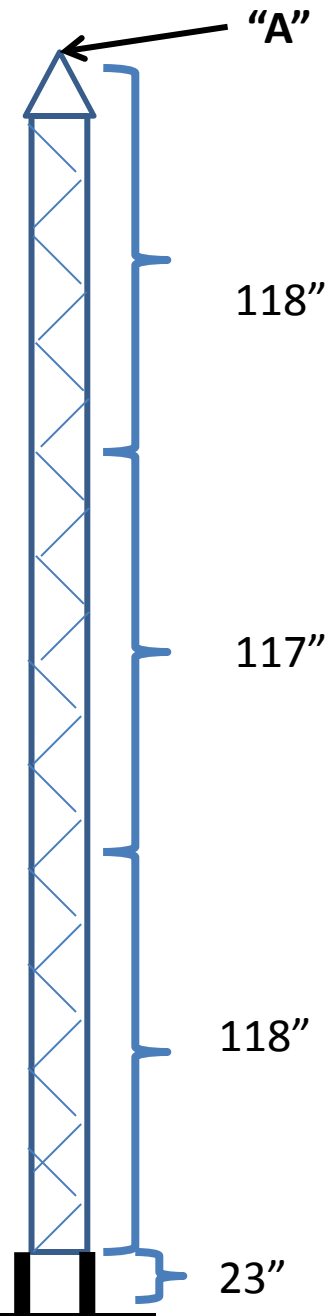
7/11/2013 Measurements



# Tower measurements 7/8/2013

Instruments are referenced to top of tower "A"

		Above water
Sonic	+43" (1.09m)	18.31m
LiCor	-9"	16.99m
T/TH	-40"	16.20m
ORG	-22"	16.66m
Deck to water	25' 2"	7.67m
Tower =	31.33' (9.55m)	17.22m

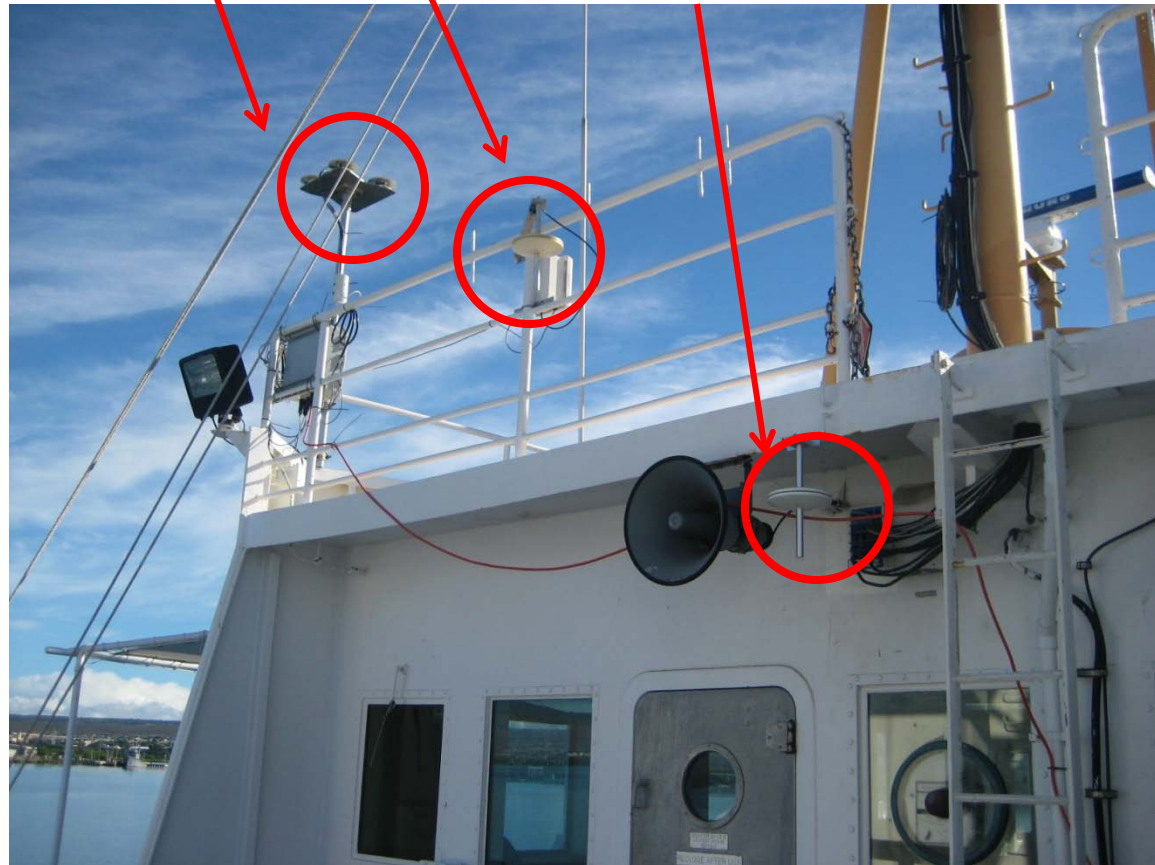




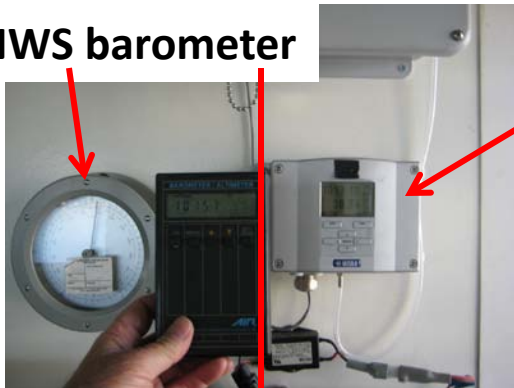
**PSD3 radiometers  
15.937m above water**

**PSD3 dynamic pressure port and sensor  
14.388m above water**

**Ship dynamic pressure port  
12.02m above water**



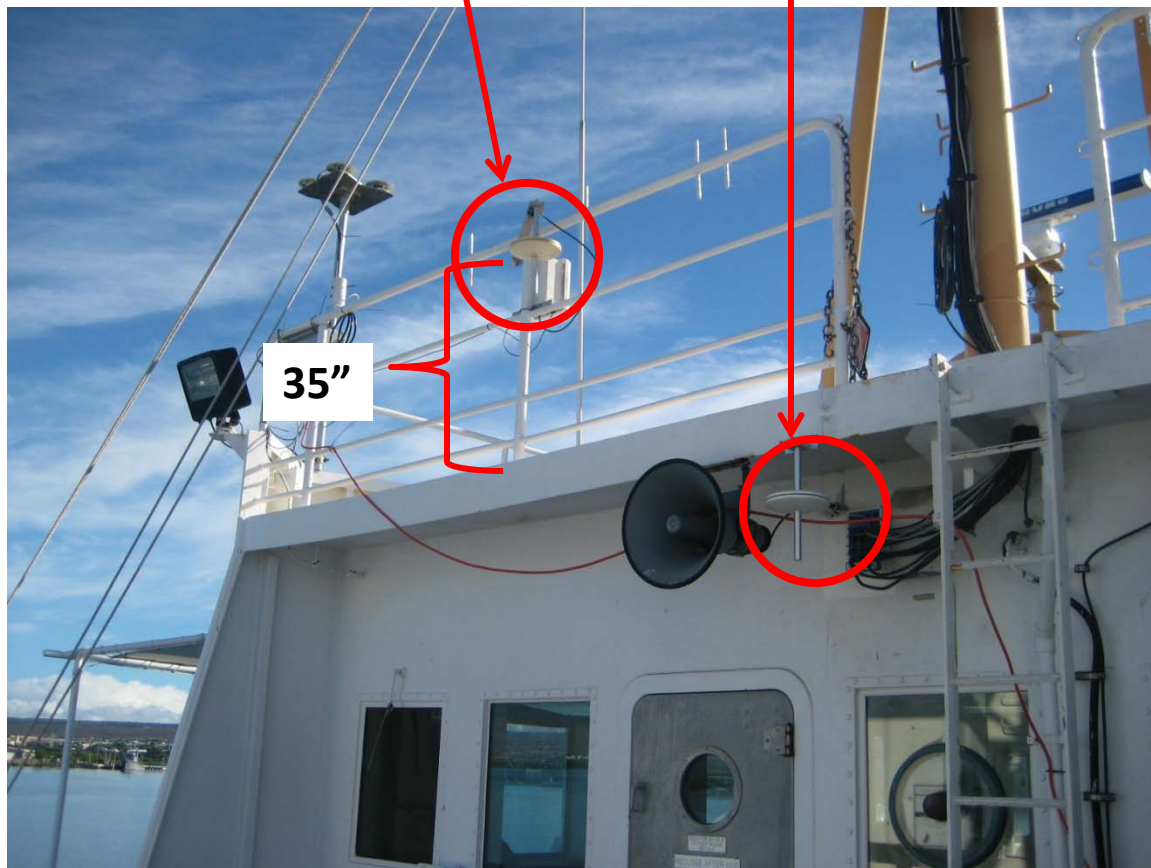
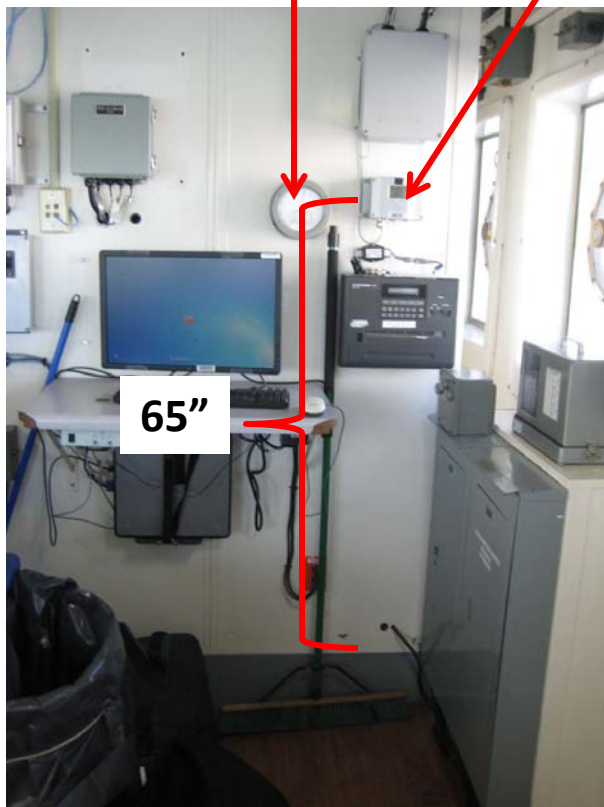
NWS barometer



Ship pressure  
12.02m above water

PSD3 dynamic pressure port and sensor

Ship dynamic pressure port



65"

35"



**PSD3 Hand Held barometer**

**Ship pressure sensor**

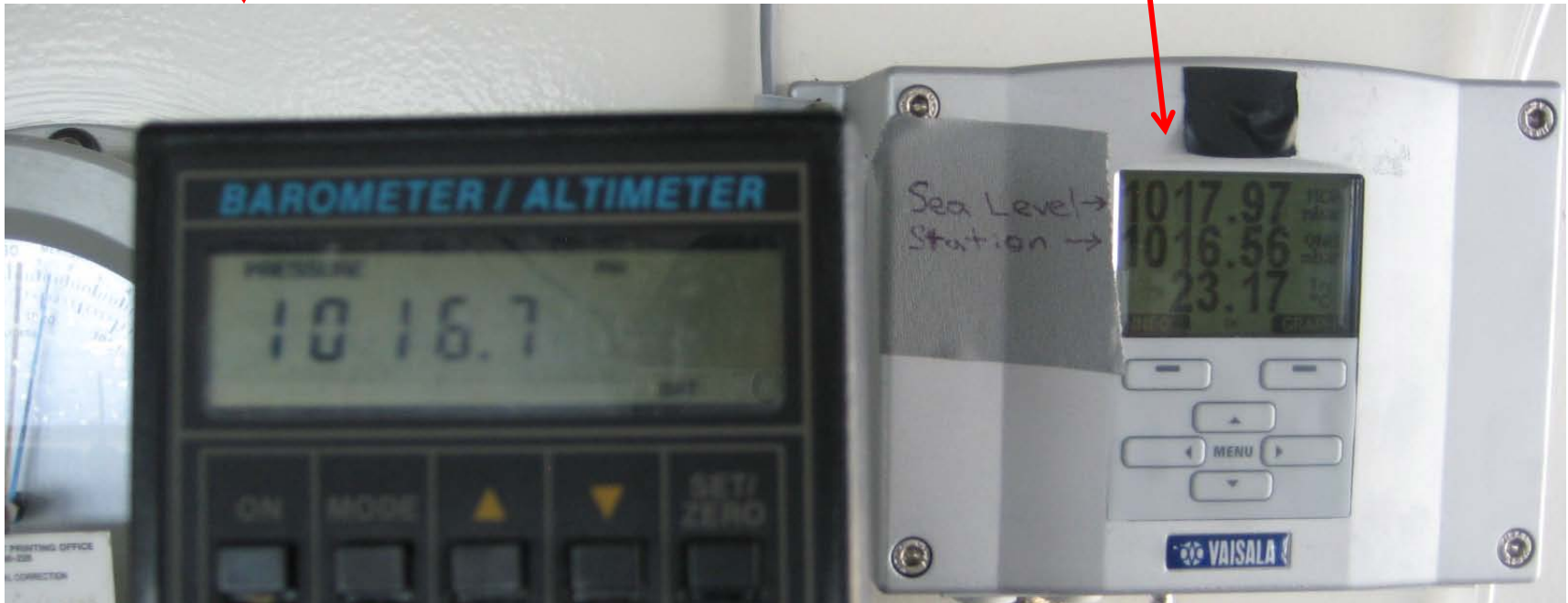


**Prior to resetting Vaisala unit  
w/30m offset**

**PSD3 Hand Held barometer**



**Ship pressure sensor  
Vaisala PTB330**



**After resetting Vaisala unit  
7/11/2013 ~0115UTC**

**NWS barometer last calibrated 7/25/2011  
Appears to be reading Sea level pressure  
~.3-.5 mb higher than Vaisala**

**PSD3 dynamic pressure port and sensor**



**Ship dynamic pressure port**



**116 "+ 35" + fm deck 2 to PSD pressure**



**Standing plate is 46" above Deck**

**Above water**

**RMY Press**

**14.92m**

**RMY T/RH**

**15.27**

**RMY Sonic**

**15.88**

**48"**

**24"**

**10"**

